

THE ARCHITECTURAL REVIEW

WWW.ARPLUS.COM

UK £6.95/€12 USA \$21.99 CAN \$22.95 OCTOBER 2004



CANADA

Saucier & Perrotte's walk in the woods Patkau Architects in British Columbia



STEIN MEDICAL CLINIC

WALK IN
FLU SHOTS
GENERAL PRACTICE
SPORTS MEDICINE
CORPORATE HEALTH
PROFESSIONAL COACHING
TRAVEL MEDICINE
MASSAGE THERAPY

STEIN WALK-IN MEDICAL CLINIC, VANCOUVER, CANADA
 ARCHITECT
PETER CARDEW ARCHITECTS

In the late 1970s, walk-in clinics emerged as a new kind of building type in Canada as traditional close-to-home general practitioners were increasingly unable to meet the needs of a busy, mobile population. Using vacant retail space in strip malls and sites in city centres, these clinics provide convenient care without appointment and ensure that primary medical care is readily available in Canada's system of social medicine.

The Stein Walk-In Clinic in downtown Vancouver, by Peter Cardew Architects, serves both the travelling and working public, providing the services of the family doctor as well as sports medicine and therapeutic massage. The clinic occupies a triangle of space on the ground level of a new office tower in central Vancouver. Entered directly from the street, it is fully glazed with alternating 75mm

wide bands of clear and translucent glass to provide privacy and glimpses of trees in the tower's forecourt. Instead of the usual clutter of signs, notices, medical records and tattered out-of-date magazines, here a limited palette of materials that are carefully detailed creates a serene atmosphere. The honed dark grey granite floor, which continues the paving of the forecourt, turns up to form a reception desk, and a specially designed birch-veneered plywood bench provides a place where patients can wait and, like an audience, contemplate the enigmatic scene.

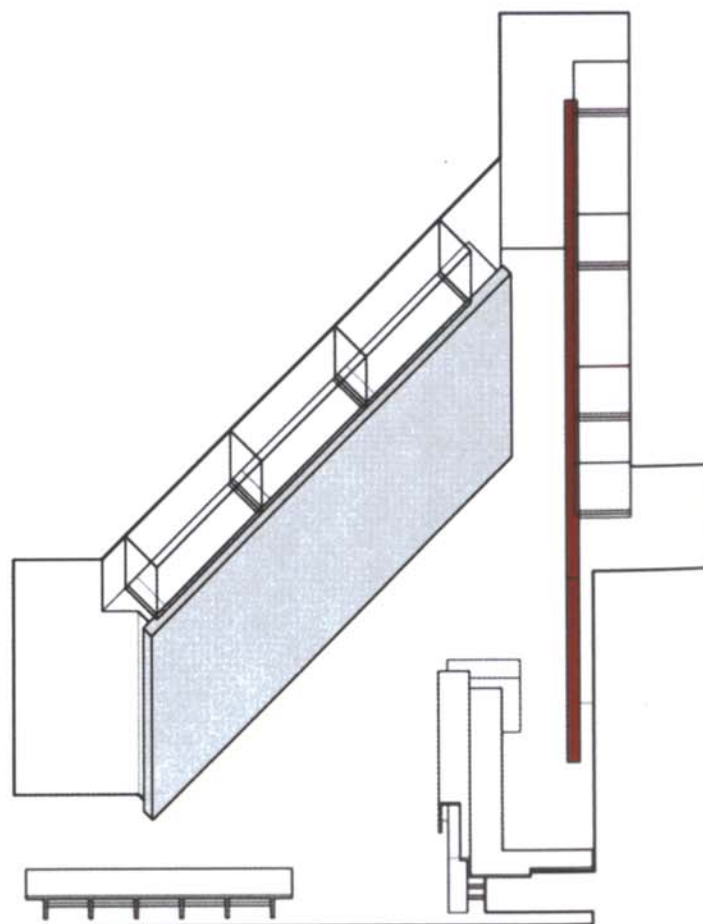
Within the white space, two 3m high seemingly free-standing walls – one painted dark grey and the other red – converge towards the rear of the triangular plan to create a space that effectively combines waiting area with circulation to eliminate

the seemingly inevitable double-loaded corridor typical of medical facilities. Each wall has three identical doors. Painted to match the walls, the doors are detailed without architraves to be flush with the face of the wall and have minimal visible ironmongery. Behind the grey wall there are physicians' offices, a treatment room for minor surgery and a laboratory, while the red wall conceals three examination rooms.

Much care has been taken to design these spaces with the patients' physical and psychological comfort in mind. In contrast with the clinics that the architect visited with his client in the course of design, these 4m² exam rooms are compact in plan yet generous in section, taking advantage of the 5m floor-to-ceiling height of the office building's lobby. Coloured interior walls are isolated from the ceiling by a clerestory of butt

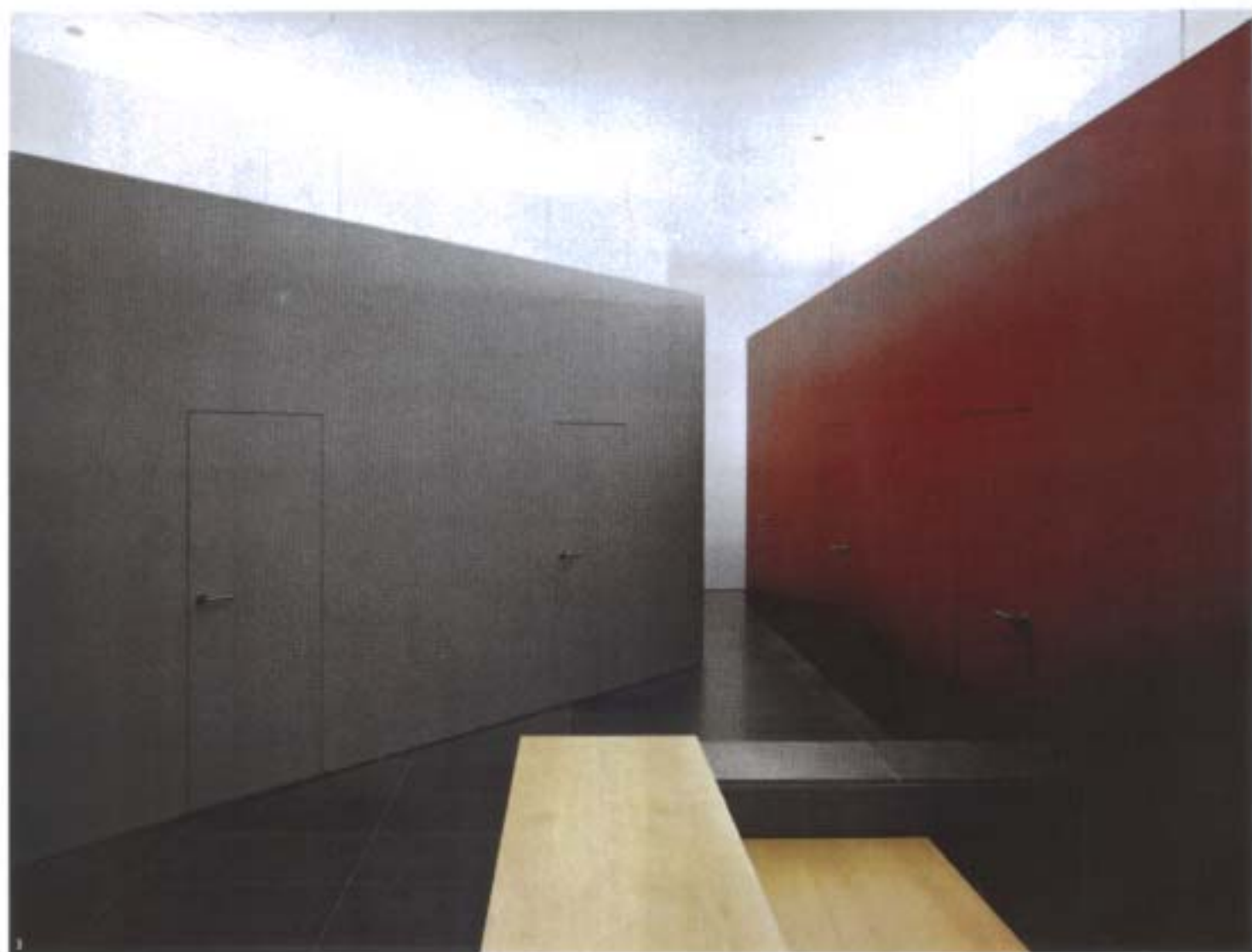
Well conceived

A new walk-in clinic in downtown Vancouver.



- 1 Passing through the clinic's glazed office foyer entrance ...
- 2 ... clients immediately enter into a granite-lined reception and waiting area.
- 3 Two screen walls conceal the clinic's six principal consultation rooms.

axonometric showing inserted elements



jointed glazing, which both admits borrowed daylight into these totally internal spaces and, using concealed fluorescent tubes, provides artificial light to the rooms and the reception space. The only loose furniture is an aluminium chair and a stool for the doctor. All other fittings, designed by the architect, are cantilevered from the wall and unified into a single birch-faced plywood lining that incorporates the exam table, a wall and angle-poise task light, the ceiling, storage cabinets, a write-up space and stainless-steel wash basin. Rather than gazing at an acoustic ceiling with egg-crate light diffusers, patients on the exam table see wood richly

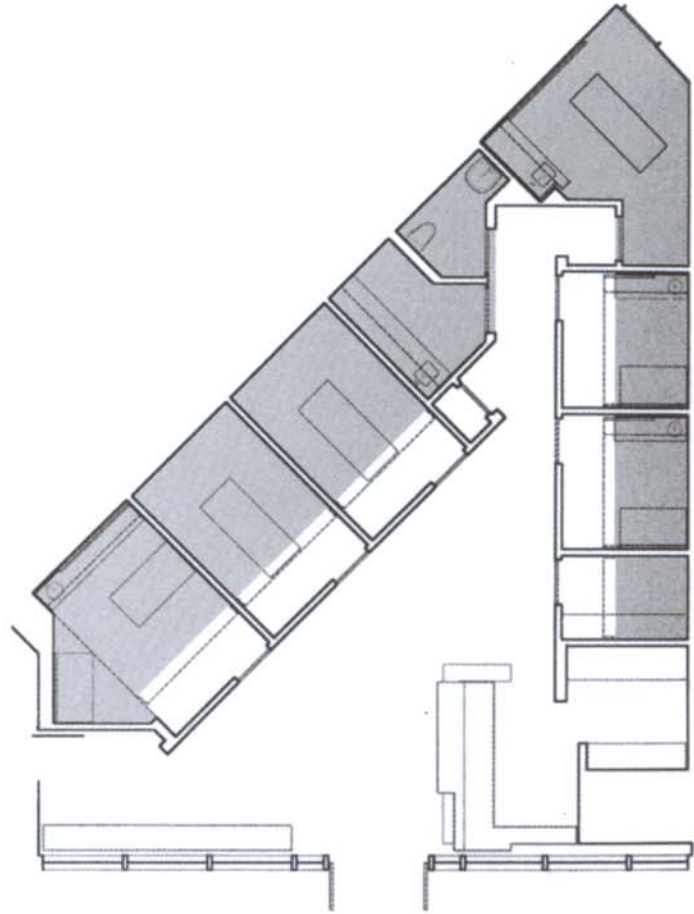
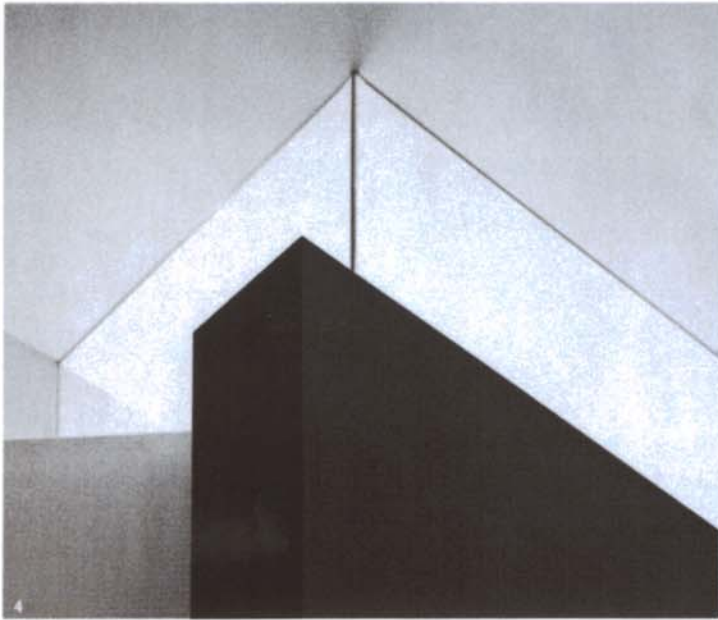
illuminated by a pendant uplighter and the concealed clerestory lighting.

While the clinic feels both caring and luxurious, it is also efficient, enabling two physicians to see up to 120 people per day. Although this high standard of design might be expected in private sector healthcare, it is exceptional in being part of Canada's one-tier national health system. The Stein Walk-In Medical Clinic provides a much-needed new benchmark for the delivery of primary care medical services – everywhere.

Architect
Peter Cardew Architects, Vancouver
Photographs
Supplied by the architects

**STEIN WALK-IN MEDICAL CLINIC,
VANCOUVER, CANADA**

ARCHITECT
PETER CARDEW ARCHITECTS



plan of dual entrances, consultation room, reception
(scale approx 1:150)



4
Detail of clerestory to consultation rooms.
5
All fittings including examination tables were designed by Cardew's team.